

POWER-VAC SWEEPERS

**PICKS UP EVERYTHING
SAVE TIME AND MONEY**



CLEANS UP TO 40,000 SQUARE FEET/HOUR
MACHINE SHOP SHAVINGS, FLAT STOCK, CANS, BOTTLES, BROKEN
GLASS, SAND, PIECES OF WIRE, STRING, ROPE, ACORNS, WET AND
DRY LEAVES, PAPER, MILK CARTONS, WRAPPINGS, CUPS, SCREWS,
WASHERS, PLASTIC BOTTLES, FOAM PACKAGING, NEWSPAPERS,
SAWDUST & WOOD SHAVINGS, INSULATION, BOXES, ETC.

ELGEE
POWER-VACTM

ELGEE POWER -VAC SWEEPERS

HANDLE ASSEMBLY: Install 5 hole handle leg on right side of body with 5/16 - 18 x 1 3/4 bolts, flat washer and elastic stop nuts. Install 3 hole handle leg on left side of body with 5/16 x 1 3/4 flat washers and elastic stop nuts. Reference handle assembly drawing)
Slide I.D. of each end of the U-handle over expanded end of above legs. NOTE: 2 small holes for mounting of throttle lever will be on the right at the operator position. Install 5/16 - 18 x 1 1/4 bolts through U-handle and legs, then tighten.

THROTTLE CONTROL: Install on engine first. See engine instruction sheet. Attach control lever at top of handle with screw provided (see assembly drawing). Use clips to hold control wire casing against handle. Work control for ease of operation and see that speed control on engine moves to both limits. Tighten inner control wire clamp, cut off excess and bend under.

DEFLECTOR BAFFLE: Install Deflector Baffle on the discharge chute of sweeper housing. Slide from left to right with ends of deflector baffle in the top and bottom channel of discharge chute. **Do not run the machine without the deflector baffle installed.** (See separate sheet)

DOLLY ASSEMBLY: Snaps (light press) over axle for easy attachment and use.

BAG: The Elgee bags are designed for use with the dolly platform that keeps the machine in proper balance and the bag from dragging on the ground while in use. When possible open the side vent zipper to allow dust and air to escape. This venting of air will allow the unit to pick up better and longer. When not practical to exhaust dust, close the zipper. **Shake out bag dust often to maintain good suction.**

BAG INSTALLATION: Slip the neck of the filter bag over the deflector baffle and past the U channels of the housing. Strap clamp should be just beyond top channel. Allow bag to dry when wet to avoid rotting. Launder only if necessary in cold water with bag inside out. **Do not hot air dry.** Hang to dry.

ENGINE: Read engine manual before starting.

USE OF SWEEPER: Throttle speed setting and speed of work depends upon debris to be cleaned and frequency of cleaning. Engine speed should be set at lowest RPM and still pick up debris. When encountering large debris such as cans, milk cartons, cups etc push down on handle raising the front of the unit, this will allow debris to pass under and into the unit.

MAINTENANCE: Clean bag often. Shake out dust to allow pores to breathe. Check engine oil level with each use. Add oil as needed.

CHANGE OIL: Remove filler cap, tilt unit and drain oil into large can. **Always remove spark plug wire from spark plug when working on the engine.** Refill oil as recommended in engine manual. Do not overfill.

Limited Warranty

Elgee equipment carries a one year warranty against mechanical defect and workmanship, except for bags, throttle wires and rubber parts. Should defects develop, parts must be returned to our factory, prepaid, for inspection. Defective parts will be repaired or replaced (customer to furnish labor for removal and replacement of said parts). We will not be responsible for repairs outside of our factory without authorization.

ENGINE WARRANTY: Is subject to terms and conditions of the engine manufacturer. Engines may be sent to Elgee Mfg. Co., Inc. or any local motor dealer for repair.

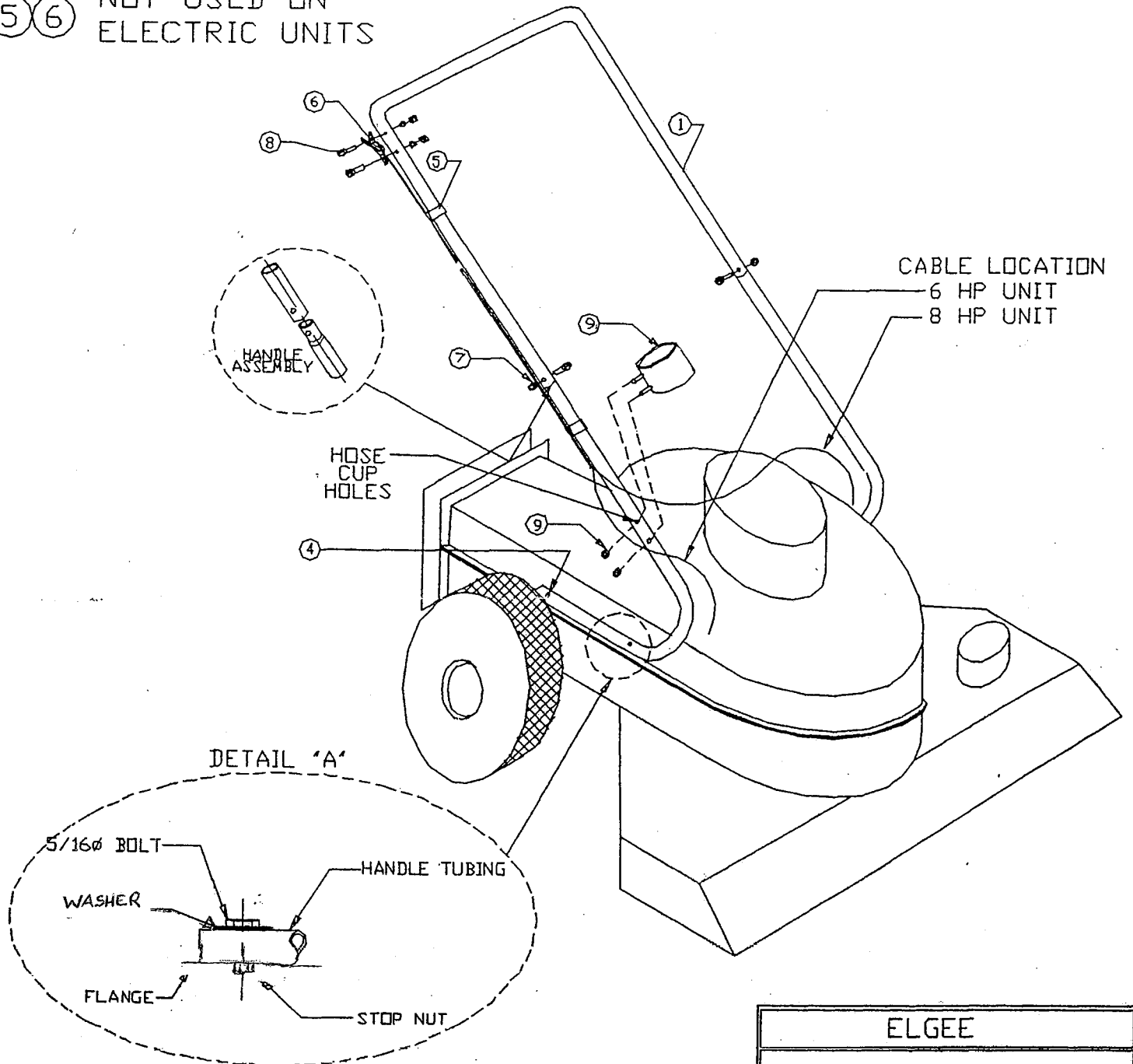
ITEM	QTY	DESCRIPTION
1	1	HANDLE "U"
2	2	HANDLE LEGS
3		NOT USED
4	4	5/16 NYLON STOP NUTS
5	2	CABLE CLIP
6	1	THROTTLE CONTROL
7	2	5/16-18 x 1 1/4, NUTS
8	1	10-24 x 1 1/4 SCR, NUTS
9	1	HOSE CUP, 1/4 NUTS [2]
10	1	HOSE BRACKET, 5/16 BOLT NUT, LOCKWASHER

HOLD IN PLACE AND INSTALL
HANDLE LEGS WITH BOLTS
WASHERS AND STOP NUTS

SEE DETAIL "A"

DO NOT TIGHTEN UNTIL HANDLE "U"
HAS BEEN ASSEMBLED ONTO LEGS

(5)(6) NOT USED ON
ELECTRIC UNITS

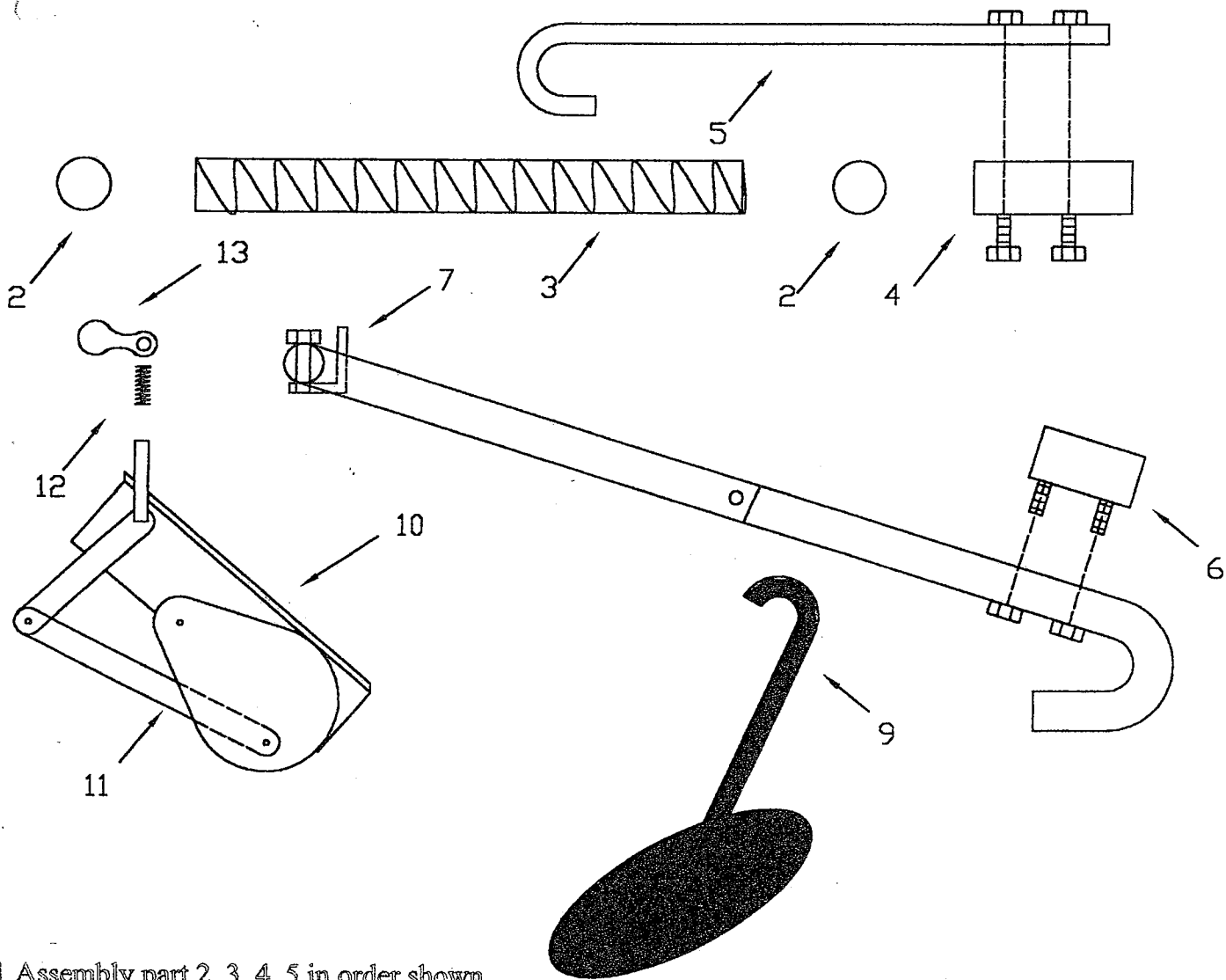


ELGEE		
HANDLE ASSEMBLY GASOLINE AND ELECTRIC UNITS		
DWG NO.		REV

EL1.DWG

INSTANT HOSE ASSEMBLY

INSTALATION AND PARTS LIST



1 Assembly part 2, 3, 4, 5 in order shown

2 Attach Hose Cup , item #6, to right handle leg (left handle leg on series C&D, at two holes provided, with open end of Cup "UP"

3 Attach Hose Retainer Bracket, item #7, to center of "U" handle at hole provided to hold hose in place. Bracket is attached to underside of "U", pointing upward.

4 Attach Hose Exhaust Cplg, item #1, to Intake Port on deck of machine, drape hose around Retainer Bracket and place nozzle in Cup.

DETAIL	PC.No.	NAME	DESCRIPTION
	2	Hose Clamp	HO-32
	3	10' Hose, Flexible vinyl, wire insert	HO-30
	4	Hose Nozzle	HO-15
	5	Cane Handle	HO-18
	6	Hose Cup	HO-44
	7	Hose Retainer Bracket	HO-47
	8	Hose Cplg, sleeve (hose to hose)	HO-38
	9	Hose Baffle Plate	HO-40
	10	Auto Baffle Bracket	HO-88
	11	Auto Baffle Assembly	HO-85
	12	Auto Baffle Spring	HO-86
	13	Auto Baffle Handle	HO-87

LPG
Liquid Propane Gas
 MAINTENANCE INSTRUCTIONS

Your machine has been converted to run on Propane Gas. This unit uses a 20 lb. Horizontal Vapor Take-Off Tank. Use of any other type of tank will void the warranty. This tank is the smallest standard unit that has such safety features as the "excess rate of flow valve" built into the tank. Should any fittings become damaged (*with the flow valve turned ON*), the safety valve would automatically shut off the escaping gas after a short burst of flow.

ALL ADJUSTMENTS FOR PROPER OPERATION WITH A 20# HORIZONTAL VAPOR TAKE-OFF TANK FOR THIS UNIT HAVE BEEN MADE AT THE FACTORY. CHECK ALL OPERATION PROCEDURES BEFORE MAKING ANY ADJUSTMENTS.

OPERATION PROCEDURES

- 1- Attaching the tank: The 45 degree relief valve should be facing upward when the tank is correctly installed. With the straps tightened the main opening valve of the tank will be facing downward. The Primary Reducer (with knurled brass fitting) will attach upward to the tank. When the tank is turned on you will hear the gas escaping into the fuel line and then stop. If it should continue turn off valve at once and see adjustments below.
- 2- Changing tanks: Shut off valve and depress button on Secondary Reducer to bleed the lines and then remove the tank.
- 3- Starting Engine: Open valve and depress button on Secondary Reducer an instant then pull starter cord. It may be necessary to crank twice to get fuel into engine. Start 1/2 throttle setting. DO NOT USE CHOKE.
- 4- Stopping Engine: Turn off valve at tank. If engine is stopped by remote control, follow by turning off tank valve.

ADJUSTMENT

Fuel Adjustment (*load block*). Attached to the back of the Secondary Reducer (*priming button*) inside the tank bracket there is a brass load block. The load block has a needle valve with a locking nut to hold adjustment in place. Loosen lock nut. Turn screw all the way in (*clockwise*). Then open slowly (*counter clockwise*) in small steps while trying to start the engine. When unit starts, continue to loosen the screw until the engine runs rough. Turn screw back in (*clockwise*) slowly until the engine runs rough. Position screw between extremes and lock. No other adjustments should be necessary.

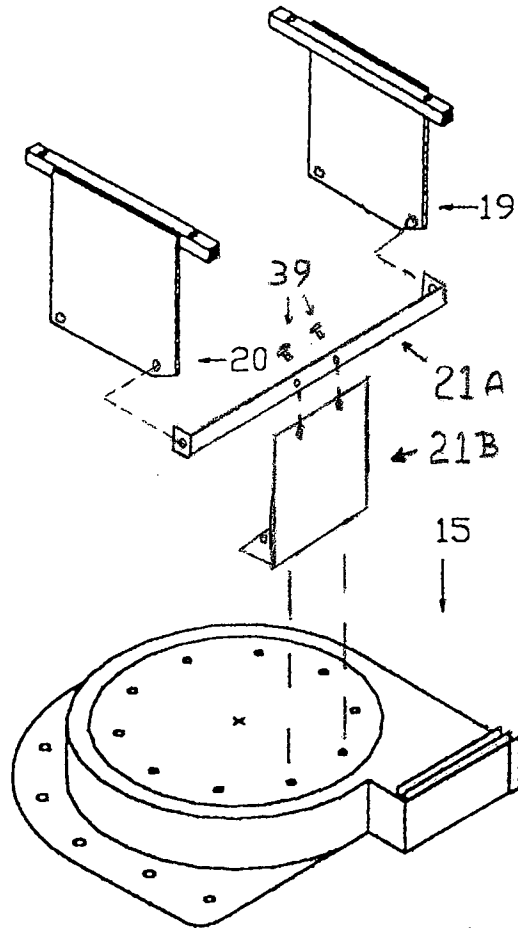
FUEL LEAKS: Put soap suds on fittings and check for leaks. Tighten if necessary, using Permatex #2 seal if needed, If a leak should occur at the Outlet of the secondary reducer the unit is not "locking off" correctly.

This unit has been carefully designed and constructed to give trouble free operation. Make only adjustments mentioned above. Servicing consists of keeping entire unit clean. Always check for correct tank on machine and maintain per engine manufacturer's Instructions.

PLEASE USE A
HORIZONTAL
VAPOR
PROPANE TANK
ONLY

POWER VAC SWEEPER PROPANE SUPPOR BRACKET

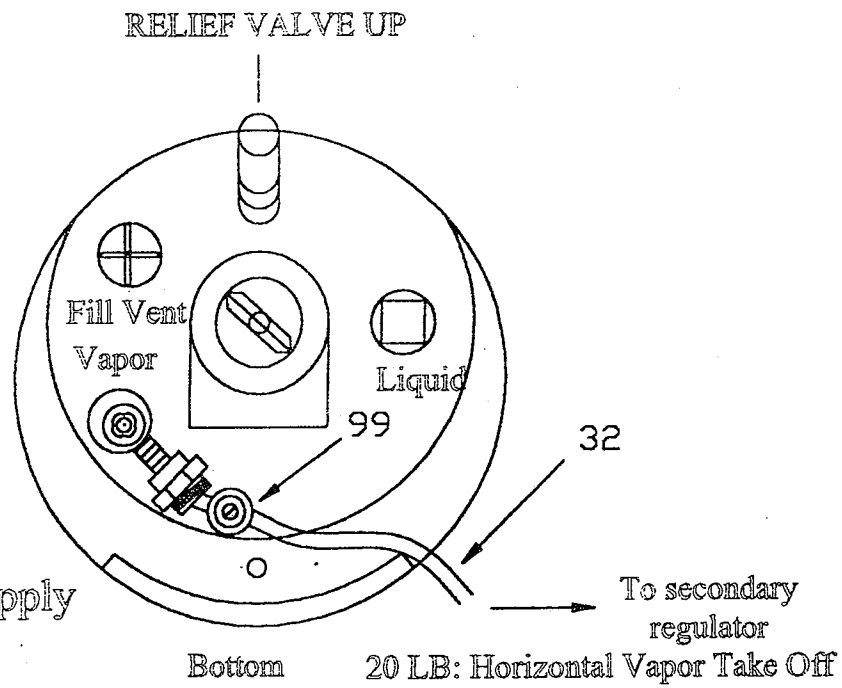
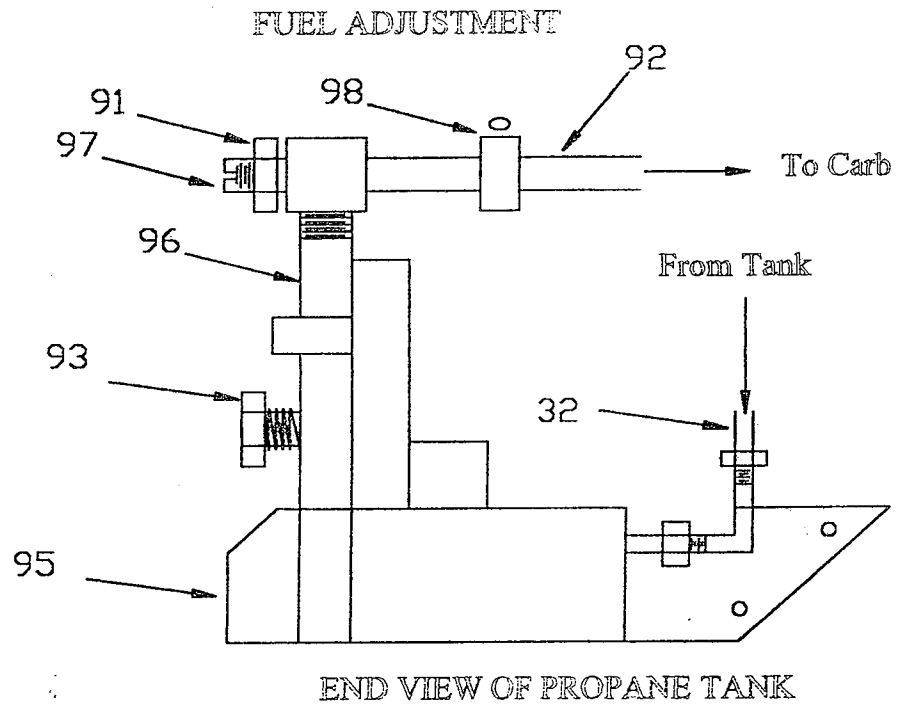
RIGHT SIDE FROM OPERATOR POSITION OF UNIT



SEE ILLUSTRATION FOR PROPER INSTALLATION

1. Install the Vertical Backplate (21B) to the rear of the machine using the existing 5/16 hardware holding the motor mount plate to the housing as shown.
2. Install the 1" X 19" side support bar (21A) to the rear of the Tank Support Brackets (19 & 20) using the existing 5/16 hardware.
3. Using the supplied 1/4-20 nuts and bolts, attach the Tank Support Bracket (21A) to the Vertical Backplate

DETAIL	PC NR	NAME	DESCRIPTION
G	21A	Side Support Bracket	1" X 19" Bar
	15	Motor Mount Plate	
	20	Tank Support Bracket	Left
	19	Tank Support Bracket	Right
	39	Screw and Nut	2 1/4-20 x 1/2" Bolts. 2 1/4-20 Nuts
	21B	Vertical Back Plate	8" X 7" Plate



CAUTION: Turn off propane supply when not in use !!

DETAIL	PC.No.	NAME	DESCRIPTION
T	33	Tank	
	91	Lock Nut	Fuel Adjustment
	92	Hose	To Carb
	93	Prime Button	
	32	Hose	From Tank
	95	Bracket	
	96	Secondary Regulator	
	32	Hose	To regulator
	97	Fuel Adjustment Screw	
	98	Load Block	
	99	Primary Regulator	

PROPANE TANK ASSEMBLY and FUEL ADJUSTMENT

ASSY NO
33

ELGIN Mfr. Co.

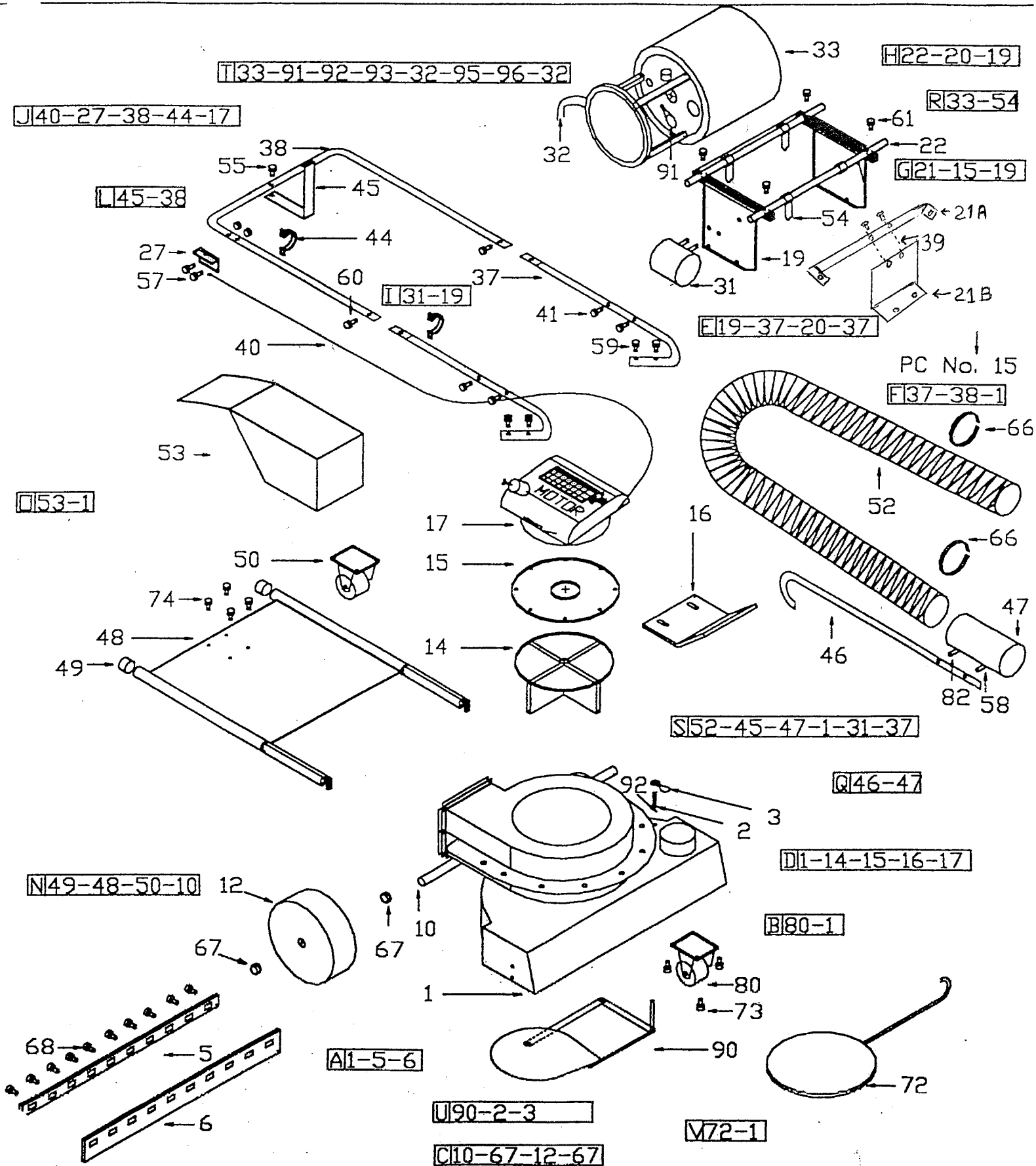
Effective July 01, 2001

LIQUID PROPANE GAS CONVERSION ASSEMBLY-PARTS LIST

DESCRIPTION

Propane Tank Bracket Assem., included	PB-00
Tank Supporting Bracket – left	PB-01
Tank Supporting Bracket – Right	PB-02
Bolts- Bracket to Handle	PB-04
Lock washers for above	PB-05
Nuts for above	PB-06
Cross bar tank support	PB-07
Bolts- Cross bar to side bracket	PB-09
Lock washers for above	PB-10
Nuts for above	PB-11
Propane tank holding strap assem.(pair)	PB-12
Side support bar	PB-15
<u>LP Kit Complete</u>	
Briggs & Stratton Engine	980-57ADKN
Honda Engine	980-63ADKN
<u>LP Kit Parts</u>	
KN-Regulator/manual primer	039-122
KN Regulator Bracket	PB-16
Load Block	133-11
¼ Nipple	414-02
Low Pressure Hose Assy	492-24
Hose Clamp	551-01
Tank Connector	557-04
3/8 FL x 3/8 P Connector	426-04
3/8 FL x 3/8 P 90 degree Connector	428-04
Hose Barb	401-02
¼ x 3/8 Reducer	415-03
¾ x 3/8 Reducer	415-07
Vapor Hose-Honda	801-6-36
Carb. Adapter-Honda	204-46
Vapor Hose-B&S	451-24
Carb. Adapter-B&S	204-46B
Primary Regulator	Y-200

POWER VAC SWEEPER PROPANE WITH HOSE 30"-40"

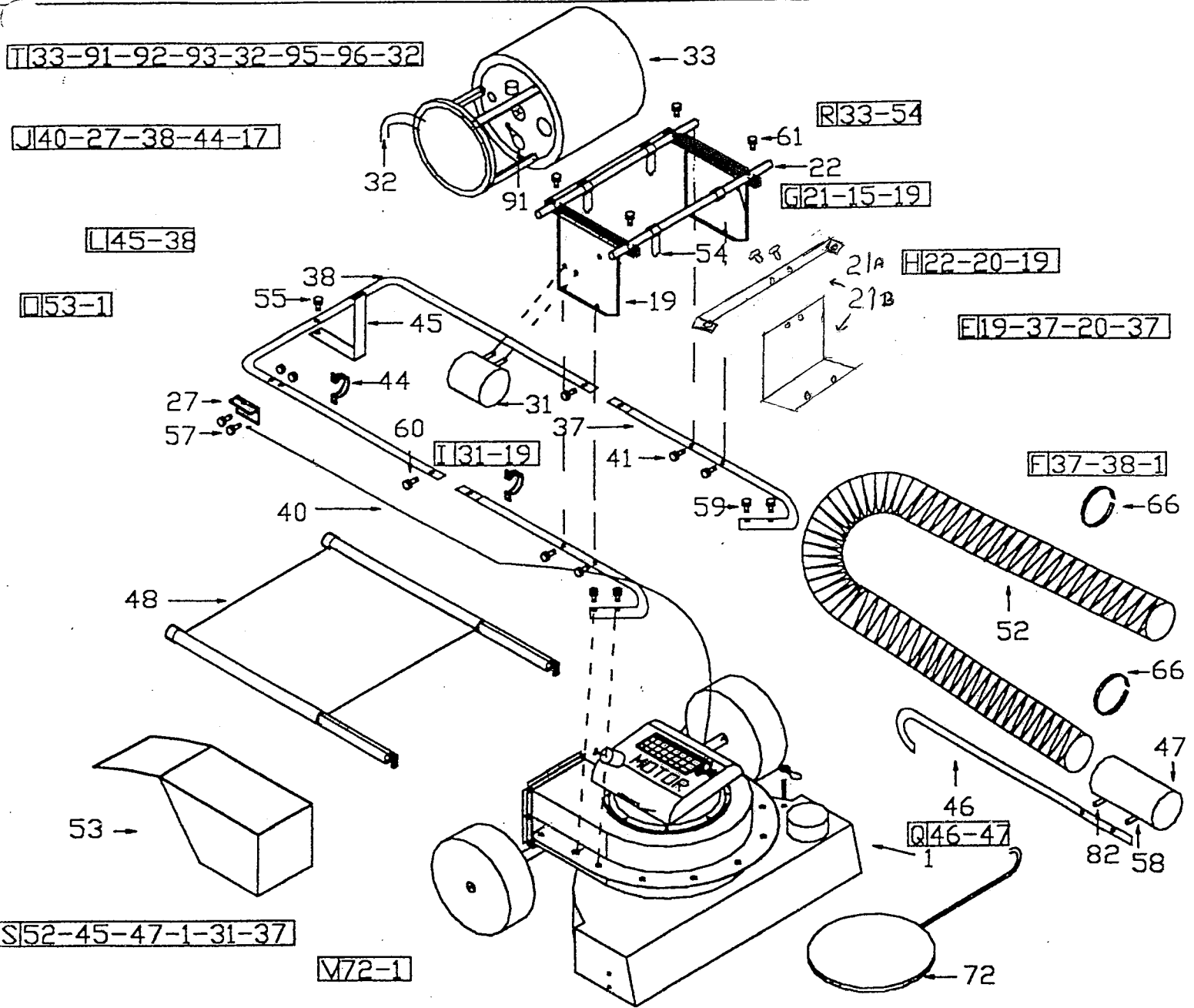


POWER-VAC-SWEEPER-PROPANE 30-40"-PARTS.LIST

With Auto Baffle # 90 or Hose Baffle # 72

DETAIL	PC.No.	NAME	DESCRIPTION	ELGEEsymbol 30" - 40"
U	90	Auto Baffle		
	2	Spring		
	3	Handle		
V	72	Hose Baffle		
	1	Involute		
STANDARD PARTS				
	61	Screw, Lock Washer, Nut	5/16-18 x 2 1/4	
	68	Screw, Lock Washer, Nut	5/16-18 x 1	
	74	Screw, Lock Washer, Nut	5/16-18 x 1 1/2	
	42	Screw, Lock Washer, Nut	5/16-18 x 13/4	
	55	Screw, Lock Washer, Nut	5/16-18 x 1 1/4	
	57	Screw, Lock Washer, Nut	10-24 x 1 1/4	
	60	Screw, Lock Washer, Nut	5/16-18 x 1 1/4	

POWER VAC SWEEPER PROPANE WITH HOSE 30'-40'

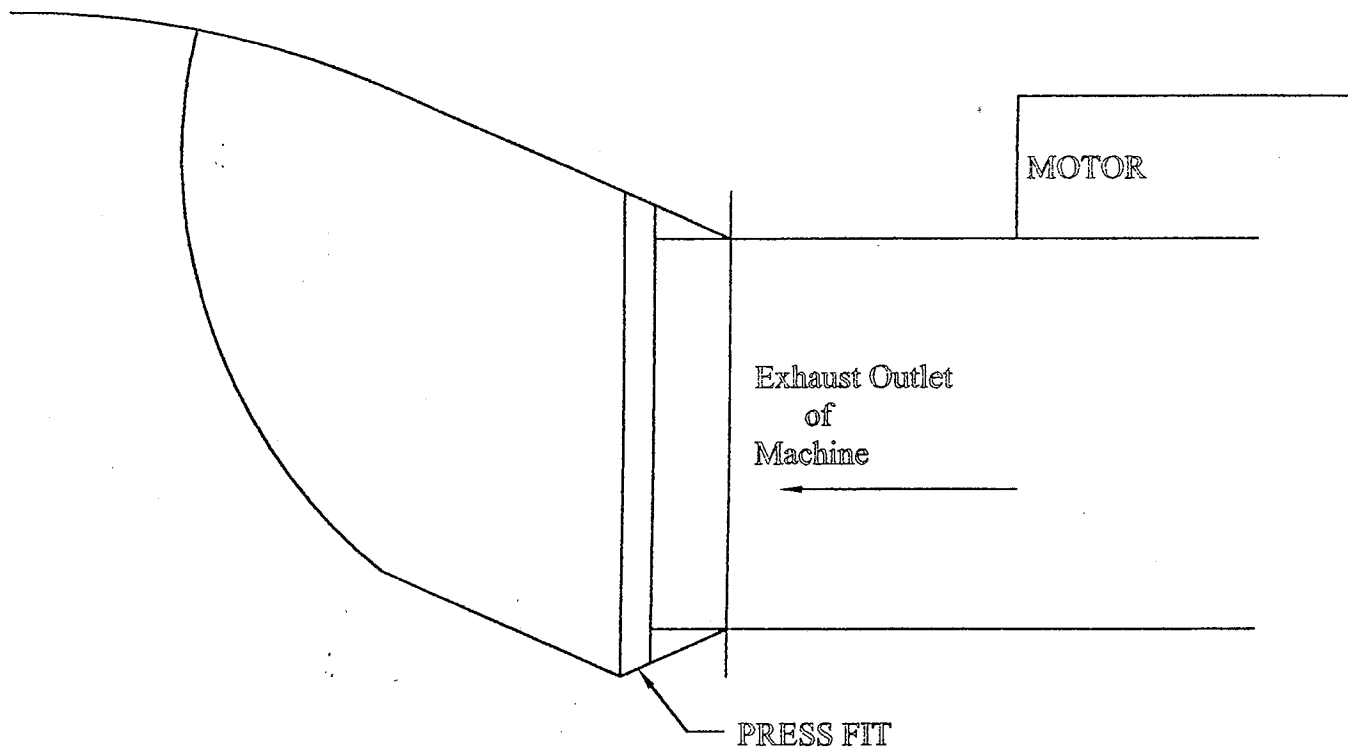


PC NR	NAME	PCS	PC NR	NAME	PC
45	Hose Retainer Bracket		19	Tank Bracket Support	
38	'U' Handle		20	Tank Bracket Support	
55	Screw 5/16-18 x 1 1/4		21A,B	Side Support Bracket	
37	Leg	2	22	Cross Bar Tank Support	2
31	Hose Cup		54	Propane Tank Holding Straps	
48	Dolly Platform		61	Screw and Nut 5/16-18x1 3/4	4
53	Deflector Baffle		39	Screw and Nut 5/16-18x1 3/4	
52	Hose		41	Screw and Nut 5/16-18x1 3/4	
46	Cane		66	Clamps	2
47	Hose Tube		57	Screws and Nuts 10-24x 1 1/4	2
59	Screw and Nut 5/16-18x1 3/4	4			
58	Screw and Nut 5/16-18x1 1/4	2			
72	Hose Baffle Plate				
27	Throttle Control				
44	Clamp	2			

POWER-VAC-SWEEPER-PROPANE 30-40"-PARTS LIST

With Auto Baffle # 90 or Hose Baffle # 72

DETAIL	PC.No.	NAME	DESCRIPTION	ELGEE symbol 30" - 40"	
A	1	Involute			
	5	Rear Flap Metal Clamp		IV - 03 IV - 43	
	6	Rear Rubber Flap		IV - 02 IV - 42	
B	80	Front Swivel Wheel		FW - 20	
	1	Involute			
C	10	Axle		SW - 25	
	12	Side wheel Martin 1" Dia	2 pcs	SW - 16	
	67	Shaft Collar 3/4" Dia	4 pcs	SW - 30	
D	1	Involute			
	14	Impellor			
	15	Motor Mount Plate			
	16	Air Shield	HONDA only		
	17	Motor	HONDA / B&S		
	E	19	Tank Support Bracket		PB - 01
		37	Leg		
20		Tank Support Bracket		PB - 02	
37		Leg		HA - 16	
F	37	Leg		HA - 16	
	1	Involute			
	38	"U" Handle		HA - 18	
G	21	Side Support Bracket		PB - 15	
	15	Motor Mount Plate			
	19	Tank Support Bracket		PB - 01	
H	22	Cross Bar Tank Support	both sides	PB - 07	
	20	Tank Support Bracket		PB - 02	
	19	Tank Support Bracket		PB - 01	
I	31	Hose Cup			
	19	Tank Support Bracket		PB - 01	
J	40	Cable			
	44	Clamp	2 pcs		
	38	"U" Handle		HA - 18	
	27	Throttle Control			
	17	Motor		B&S G70/HONDA G71	
L	45	Hose Retainer Bracket		HO - 47	
	38	"U" Handle		HA - 18	
N	48	Dolly Platform		DA - 00	
	49	Dolly Rubber Tips		DA - 02	
	50	Dolly Swivel Wheel		DA - 03	
	10	Axle		SW - 25	
O	53	Deflector Baffle		DB - 00	
	1	Involute			
Q	47	Hose Tube		HO - 38	
	46	Cane		HO - 44	
R	33	Tank and Regulators Assembly			
	54	Propane Tank Holding Straps		PB - 12	
S	52	Hose		HO - 30	
	45	Hose Retainer Bracket		HO - 47	
	47	Hose Tube		HO - 38	
	31	Hose Cup		HO - 44	
	1	Involute			
	66	Clamps	2 pcs		
	T	33	Tank		
91		Lock Nut	Fuel Adjustment		
98		Hose	To Carb		
93		Prime Button			
32		Hose	From Tank		
95		Bracket			
96		Secondary Regulator			
	32	Hose	To Regulator		



APPLICATION:

- (a) Used to provide additional protection for bags when recovering heavy or sharp debris.
- (b) Especially necessary when using the booster baffle.
- (c) Very helpful in providing a dead air space when recovering excess dust. Prolongs emptying cycle of bag during heavy dust conditions (merely shut off machine and shake down bag).

APPLICATIONS:

- (a) Install by sliding Deflector sideways in top and bottom exhaust channels as shown below. Press fit is required - use mallet to slide to center of exhaust outlet.
- (b) If deflector does not fit tightly in channels remove and bottom edge up slightly.
- (c) With the Deflector in place the bag may then be attached. The bag fits over both channels.
- (d) Care should be taken not to push the handle down toward the floor further than is necessary as it will force the Deflector against the dolly and peel off.

DO NOT RUN THE MACHINE WITHOUT DEFLECTOR BAFFLE INSTALLED !

