

POWER-VAC SWEEPERS

**PICKS UP EVERYTHING
SAVE TIME AND MONEY**



CLEANS UP TO 40,000 SQUARE FEET/HOUR
MACHINE SHOP SHAVINGS, FLAT STOCK, CANS, BOTTLES, BROKEN GLASS, SAND, PIECES OF WIRE, STRING, ROPE, ACORNS, WET AND DRY LEAVES, PAPER, MILK CARTONS, WRAPPINGS, CUPS, SCREWS, WASHERS, PLASTIC BOTTLES, FOAM PACKAGING, NEWSPAPERS, SAWDUST & WOOD SHAVINGS, INSULATION, BOXES, ETC.

ELGEE
POWER-VACTM

ELGEE POWER –VAC SWEEPERS

HANDLE ASSEMBLY: Install 5 hole handle leg on right side of body with 5/16 – 18 x 1 3/4 bolts, flat washer and elastic stop nuts. Install 3 hole handle leg on left side of body with 5/16 x 1 3/4 flat washers and elastic stop nuts. Reference handle assembly drawing)
Slide I.D. of each end of the U-handle over expanded end of above legs. NOTE: 2 small holes for mounting of throttle lever will be on the right at the operator position. Install 5/16 – 18 x 1 1/4 bolts through U-handle and legs, then tighten.

THROTTLE CONTROL: Install on engine first. See engine instruction sheet. Attach control lever at top of handle with screw provided (see assembly drawing). Use clips to hold control wire casing against handle. Work control for ease of operation and see that speed control on engine moves to both limits. Tighten inner control wire clamp, cut off excess and bend under.

DEFLECTOR BAFFLE: Install Deflector Baffle on the discharge chute of sweeper housing. Slide from left to right with ends of deflector baffle in the top and bottom channel of discharge chute. **Do not run the machine without the deflector baffle installed.** (See separate sheet)

DOLLY ASSEMBLY: Snaps (light press) over axle for easy attachment and use.

BAG: The Elgee bags are designed for use with the dolly platform that keeps the machine in proper balance and the bag from dragging on the ground while in use. When possible open the side vent zipper to allow dust and air to escape. This venting of air will allow the unit to pick up better and longer. When not practical to exhaust dust, close the zipper. **Shake out bag dust often to maintain good suction.**

BAG INSTALLATION: Slip the neck of the filter bag over the deflector baffle and past the U channels of the housing. Strap clamp should be just beyond top channel. Allow bag to dry when wet to avoid rotting. Launder only if necessary in cold water with bag inside out. **Do not hot air dry.** Hang to dry.

ENGINE: Read engine manual before starting.

USE OF SWEEPER: Throttle speed setting and speed of work depends upon debris to be cleaned and frequency of cleaning. Engine speed should be set at lowest RPM and still pick up debris. When encountering large debris such as cans, milk cartons, cups etc push down on handle raising the front of the unit, this will allow debris to pass under and into the unit.

MAINTENANCE: Clean bag often. Shake out dust to allow pores to breathe. Check engine oil level with each use. Add oil as needed.

CHANGE OIL: Remove filler cap, tilt unit and drain oil into large can. **Always remove spark plug wire from spark plug when working on the engine.** Refill oil as recommended in engine manual. Do not overfill.

Limited Warranty

Elgee equipment carries a one year warranty against mechanical defect and workmanship, except for bags, throttle wires and rubber parts. Should defects develop, parts must be returned to our factory, prepaid, for inspection. Defective parts will be repaired or replaced (customer to furnish labor for removal and replacement of said parts). We will not be responsible for repairs outside of our factory without authorization.

ENGINE WARRANTY: Is subject to terms and conditions of the engine manufacturer. Engines may be sent to Elgce Mfg. Co., Inc. or any local motor dealer for repair.

ELGEE LIMITED WARRANTY

For *ONE YEAR* from date of installation, Elgee will repair or replace (at Elgee's Opinion) for the original purchases, *FREE OF CHARGE*, any parts or parts found upon examination by the factory in Warren, New Jersey, or by any factory authorized center, to be defective in material and or workmanship.

Elgee equipment carries a one-year warranty against mechanical defects and workmanship, except for bags, wiring, fuel tubes, cables, brass nipples, and rubber parts. Should defects develop, parts must be returned to our factory prepaid for inspection. Elgee will not be responsible for repairs made outside of the factory without authorization.

Removal, reconnection, and all transportation charges on parts submitted for replacement under this warranty must be borne by the purchaser.

Any changes or modification of this unit without the expressed written consent of Elgee Manufacturing Company, Inc., will void this warranty.

Anything related to the conversion of an engine to propane fuel burning voids the manufacturers warranty pertaining to any part directly associated with propane fuel combustion. All other engine components carry full manufacturer's warranty.

Engine warranty is carried by the manufacturer and their authorized dealers. Honda engines carry a *TWO-YEAR* warranty. A *ONE-YEAR* warranty is carried on Industrial/Commercial (I/C) engines and 6HP (B&S) Intek engines. A 90-day warranty is offered on the 8HP (B&S) standard engines.

There is no warranty expressed or implied. Elgee and any or all sub-contractors shall in any event **(Not)** be liable for consequential damages.

Implied warranties, including those of merchantability and fitness for a particular purpose are limited to *ONE YEAR* from purchase and to the extent permitted by law and any and all implied warranties are excluded this is the exclusive remedy and liability for consequential damages under any and all warranties. Warranties are excluded to the extent exclusion permitted by law.

E-mail: sales@elgee.com

Website: www.elgee.com



908-647-4100

800-742-0400

Fax: 908-647-4242

Accessories Price List

Effective 01/30/09

MODEL	DESCRIPTION	PRICE
<u>Bags</u>		
<i>W/60" zipper & zippered side vent</i>		
TB-01	Filter bag cotton fleece lined	\$90.00
TB-03	Filter bag polyester felt rot-resistant	\$90.00
<u>Replacement Parts</u>		
FW-20	Front castor only (<i>Polyurethane gray wheel</i>)	\$18.95
SW-11	Side Wheel (<i>10in. x 1.75in</i>)	\$25.95
DB-00	Deflector baffle assembly	\$93.25
	<i>(Safety shield against heavy, sharp material required when using Booster Baffle)</i>	
HO-60	Hose baffle plate	\$38.75
	<i>(Used to close off bottom of a machine when maximum hose suction is required)</i>	
<u>Accessories</u>		
BR-30	Model 630 Brush Assembly (<i>constant pressure type</i>)	\$166.00
BR-40	Model 640 Brush Assembly (<i>constant pressure type</i>)	\$215.00
LB-30	Leaf Blower Attachment	\$137.00
FW-30	Adjustable Front Side Wheel Assembly Rigid type.	\$79.00
FW-40	Outboard adjustable Swivel type.....	\$197.00
BS-00	Bag Sling (<i>used in place of dolly * turf application</i>).....	\$37.00
AB-00	Automatic baffle plate	\$164.00
HO-00	Hose Assembly	\$330.00
LPT-01	20# Horizontal vapor propane tank	\$186.00
CV-01	Crack-Vac Funnel	\$230.00
<u>Special Accessories</u>		
PM-30	630 Magnetic Pick-up attachment (perm. Magnet)	\$555.00
PM-40	640 Magnetic Pick-up attachment (perm. Magnet)	\$647.00
*SA-05	Spark Arresting Assembly, 6HP 398067	\$23.00
*SA-08	Spark Arresting Assembly, 8HP 399541	\$23.00
*SA-09	Spark Arresting Assembly, 5.5 Honda 4165866	\$23.00
*LT-05	Low Toner Muffler, 6HP 391313	\$26.00
*LT-08	Low Toner Muffler, 8HP 398507	\$23.00
*SLT-08	Super Low Toner Muffler, 8HP 494222	\$35.00
*SPE-00	Spark plug elbow (<i>Spark Arrestor</i>) 66538S	\$2.60
	Electric Starter Units- (10IIP Models only) Contact factory for pricing	
	*Indicates Net Prices	

ALL PRICES ARE F.O.B WARREN, NJ U.S.A
PRICES & SPECIFICATIONS ARE SUBJECT TO CHANGE WITHOUT NOTICE
ELGEE MFG. CO., INC. 225 STIRLING ROAD, WARREN, NJ 07059
E-mail: sales@elgee.com Website: www.elgee.com



908-647-4100
800-742-0400
Fax: 908-647-4242

ELGEE MFG. CO., INC
225 STIRLING ROAD, WARREN, NJ 07059

ELECTRIC PARTS LIST

Electric motor 1.5HP, AC 60 cycle, 1 phase 110/220v	EE-00
1.5HP switch for above motor	EE-02
Motor Mount Plate Assembly	MP-11
Motor Mount Plate Bolts	MP-12
60 ft. 12-3 non-marking cable w/female twist lock & 3 prong male plug	EC-00
100 ft. 12-3 non-marking cable w/female twist lock & 3 prong male plug	EC-10
Impellor for electric motor	IM-10
Cotton fleece lined filter bag replacement	TB-01
Polyester felt lined filter bag replacement	TB-03

INSTRUCTION

The Elgee 600E series is an efficient electric motor operated Vacuum Sweeper designed for either 110V or 220V operation. It is wired at the factory for 110V, unless otherwise requested.

This unit is designed for use with a Deflector Baffle and either a Booster Baffle or an Instant Hose Booster Baffle. These accessories come with the machine.

INSTALLATION

Attach cable by twist lock connection. Cable may be taped to either side of the handle or left free for ease in removal depending upon operators preference.

Store cable by wrapping it around the motor.

WARRANTY

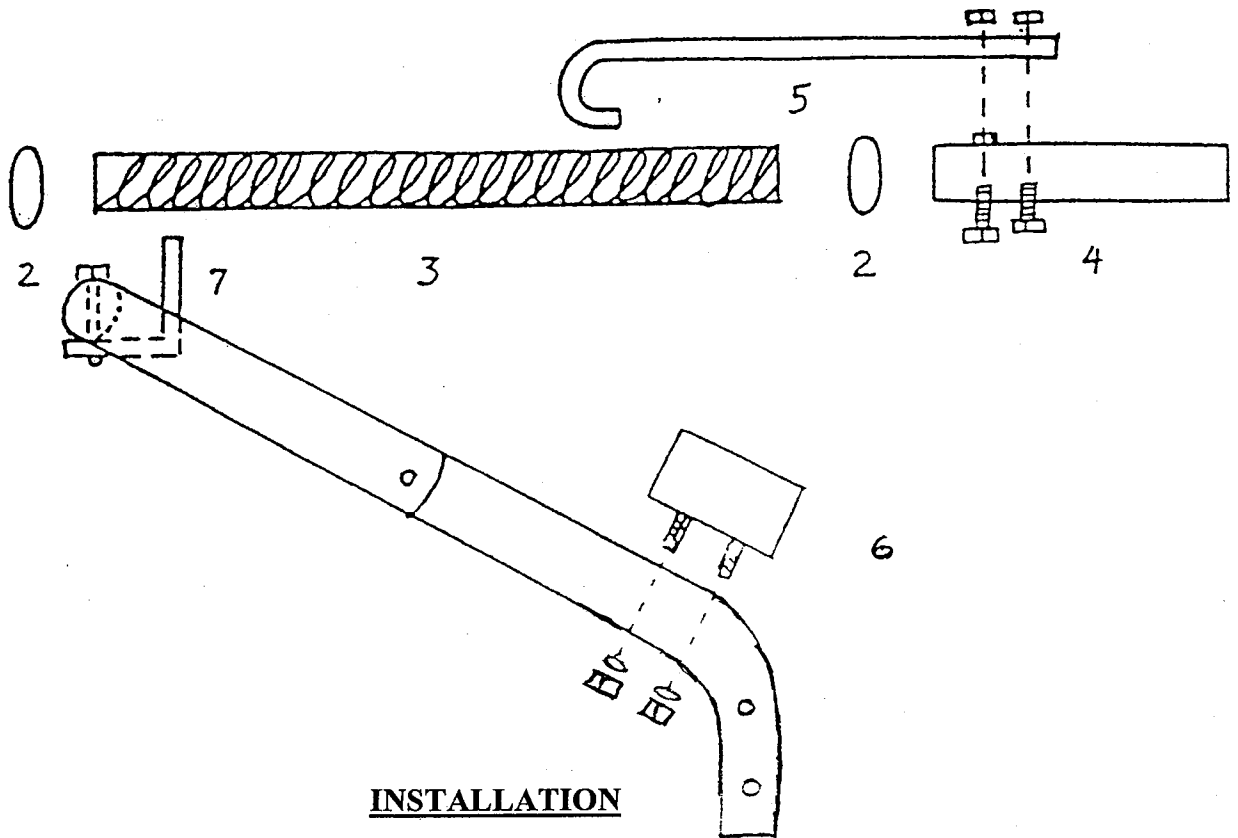
The machine comes with a limited one year warranty against mechanical defects and workmanship. See separate sheet for complete warranty.

E-mail: sales@elgee.com

Website: www.elgee.com

600 SERIES INSTANT HOSE ASSEMBLY

INSTALLATION AND PARTS LIST



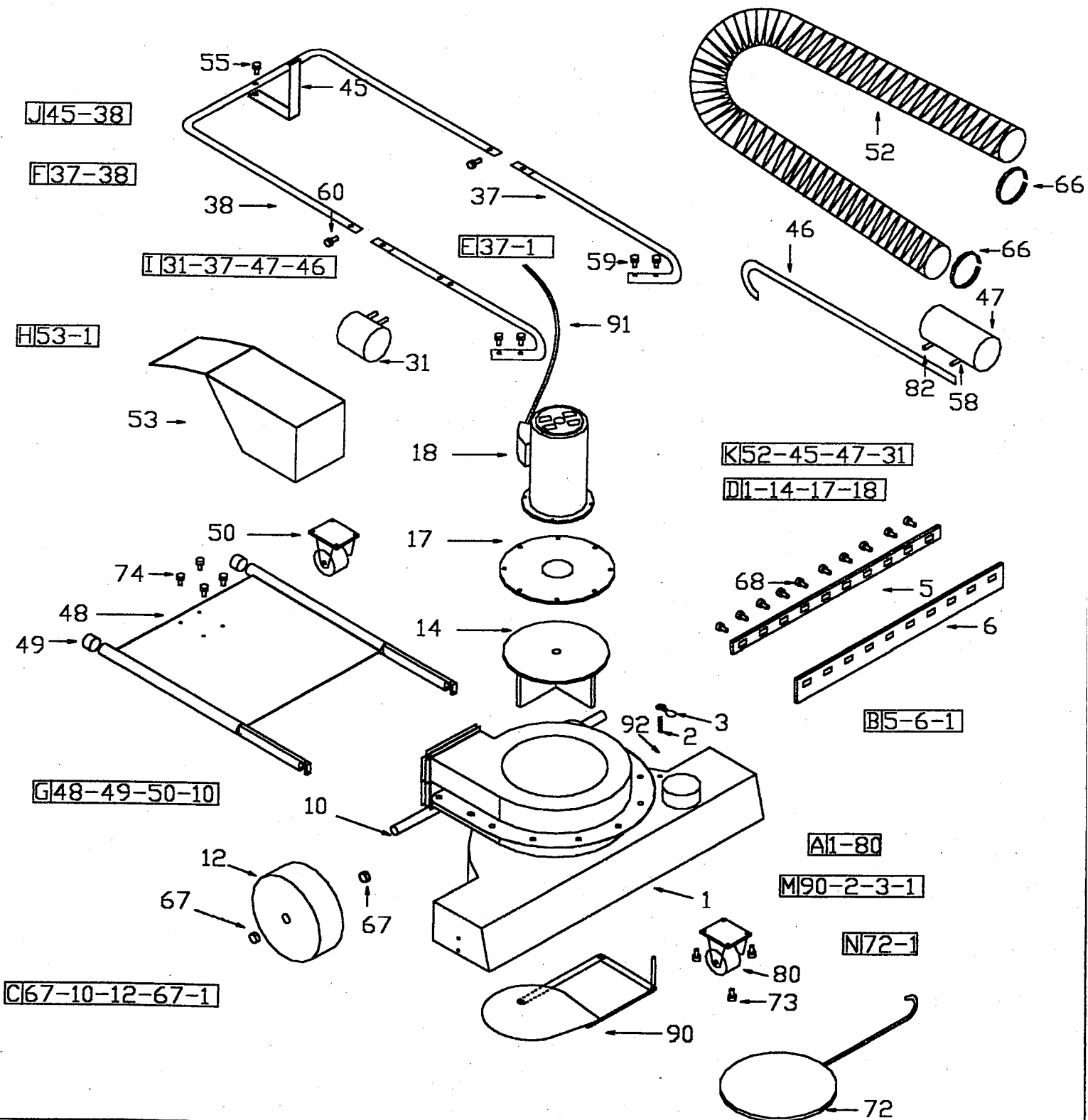
INSTALLATION

1. Assemble part 1, 2, 3, 4, & 5 in order shown.
2. Attach Hose Cup, item #6, to right handle leg (left handle leg on series C & D), at two holes provided, with open end of Cup "Up".
3. Attach Hose Retainer Bracket, item #7, to center of "U" handle at hole provided to hold hose in place. Bracket is attached to underside of "U", pointing upward.
4. Attach Hose Exhaust Cplg., item #1, to Intake Port on deck of machine, drape hose around Retainer Bracket and place Nozzle in Cup.

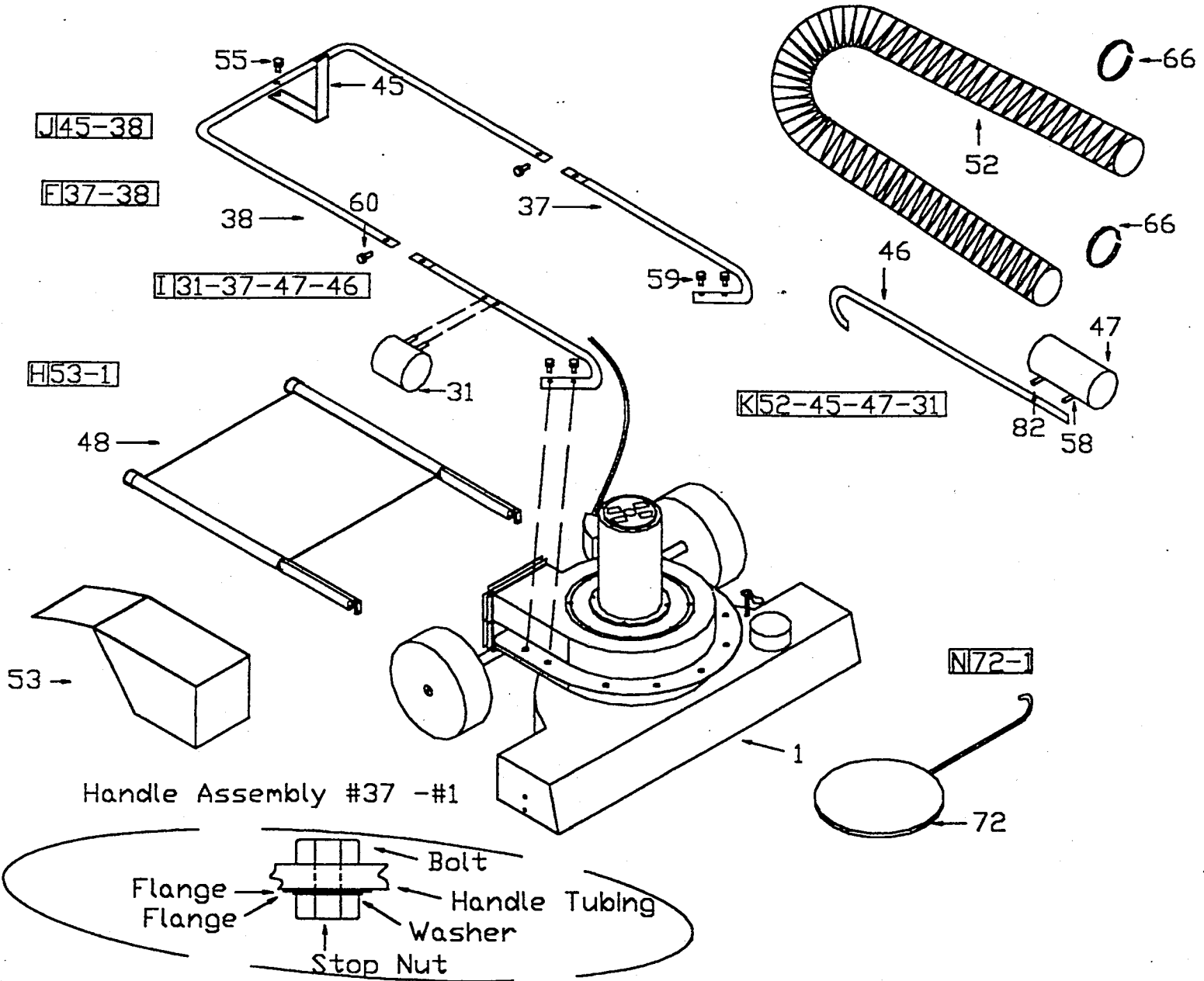
PART NUMBERS

<u>Ref. #</u>	<u>PART</u>	<u>HOSE SIZE 4"</u>
1.	Hose Exhaust Cplg.	---
2.	Hose Clamp	HO-32
3.	10" Hose, Flexible vinyl, wire insert	HO-30
4.	Hose Nozzle	HO-15
5.	Cane Handle	HO-18
6.	Hose Cup	HO-44
7.	Hose Retainer Bracket	HO-47
8.	Hose Cplg. Sleeve (hose to hose)	HO-38

POWER VAC SWEEPER ELECTRIC WITH HOSE 30"-40"



POWER VAC SWEEPER ELECTRIC WITH HOSE 30"-40"



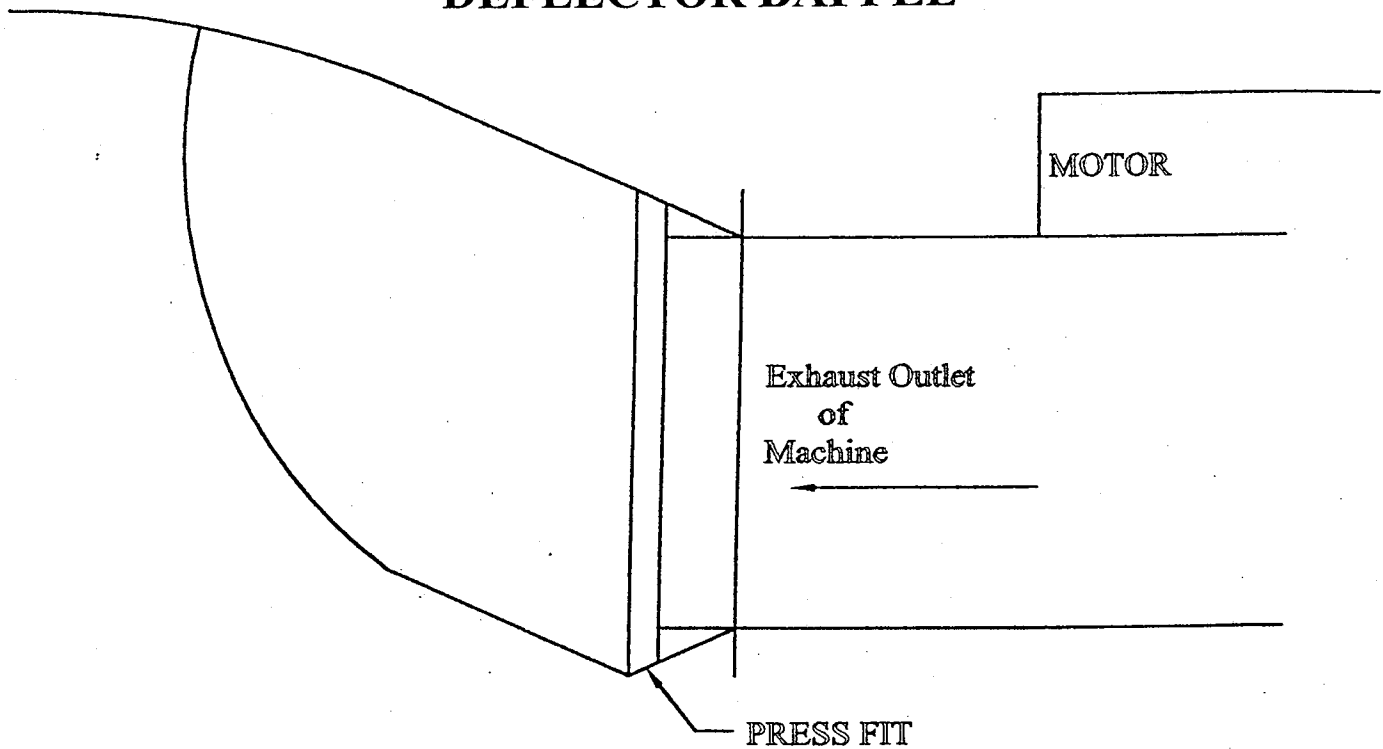
DETAIL	PC NR	NAME	DESCRIPTION
	45	Hose Retainer Bracket	
	38	'U' Handle	
	55	Screw 5/16-18 x 1 1/4	
	37	Leg	2 pcs
	31	Hose Cup	
	48	Dolly Platform	
	53	Deflector Baffle	
	52	Hose	
	46	Cane	
	47	Hose Tube	
	59	Screw and Nut 5/16-18x1 3/4	4 pcs
	60	Screw and Nut 5/16-18x1 1/4	2 pcs
	72	Hose Baffle Plate	
	66	Clamps	2 pcs

POWER-VAC-SWEEPER-ELECTRIC 30-40' PARTS LIST

With Auto Baffle # 90 or Hose Baffle # 72

DETAIL	PC.No.	NAME	DESCRIPTION	ELGEE symbol 30" - 40"
A	1	Involute		IV - 70 IV - 71
	80	Front Swivel Wheel		FW - 20
B	5	Rear Flap Metal Clamp		IV - 03 IV - 43
	6	Rear Rubber Flap		IV - 02 IV - 42
	1	Involute		IV - 70 IV - 71
C	67	Shaft Collar 3/4" Dia	2 pcs	SW - 30
	10	Axle		
	12	Side wheel Martin 1" Dia	2 pcs	SW - 16
	67	Shaft Collar 3/4" Dia	2 pcs	SW - 30
	1	Involute		IV - 70 IV - 71
D	1	Involute		IV - 70 IV - 71
	14	Impellor		IV - 70 IV - 71
	17	Motor Mount Plate		IV - 70 IV - 71
	18	Motor	1.5 HP , AC 60 Cycle, 1 Phase 110/220/v	
E	37	Leg	2 pcs	HA - 16
	1	Involute		
F	38	"U" Handle		HA - 18
	37	Leg	2 pcs	HA - 16
G	48	Dolly Platform		DO - 00
	49	Rubber Tips for Dolly Shaft	2 pcs	DA - 02
	50	Dolly Swivel Wheel		DA - 03
	10	Axle		
H	53	Deflector Baffle		DB - 00
	1	Involute		
I	31	Hose Cup		HO - 44
	37	Leg		HA - 16
	47	Hose Tube		HO - 38
	31	Cane		HO - 18
J	45	Hose Retainer Bracket		HO - 47
	38	"U" Handle		HA - 18
K	52	Hose		HO - 30
	45	Hose Retainer Bracket		HO - 47
	47	Hose Tube		HO - 38
	31	Hose Cup		HO - 44
	66	Clamps	2 pcs	
M	90	Auto Baffle		
	2	Auto Baffle Spring		
	3	Auto Baffle Handle		
	1	Involute		
	92	Cover		
N	1	Involute		
	72	Hose Baffle		
STANDARD PARTS				
	59	Screw, Washer, Nut	5/16-18 x 1	
	60	Screw, Washer, Nut	5/16-18 x 1 1/4	
	55	Screw, Washer, Nut	10-24 x 1/2	
	74	Screw, Washer, Nut	5/16-18 x 1 3/4	
	73	Screw, Washer, Nut	5/16-18 x 5/8	
	68	Screw, Washer, Nut		
	91	Cable	60 ft 12-3 Non Marking Cable w/female	

DEFLECTOR BAFFLE



APPLICATION:

- (a) Used to provide additional protection for bags when recovering heavy or sharp debris.
- (b) Especially necessary when using booster baffle.
- (c) Very helpful in providing dead air space when recovering excess dust. Prolongs emptying cycle of bag during heavy dust conditions (merely shut off machine and shake bag down)

INSTALLATION:

- (a) Install by sliding the Deflector sideways in top and bottom exhaust channels as shown above. Press fit is required. Start at the Center of the machine and strike with mallet or wood to slide until centered over exhaust outlet.
- (b) If Deflector does not fit tightly in channels, remove and bend bottom edge of 16 gauge sheet metal lip up slightly, for Press fit.
- (c) With Deflector in place the bag may then be attached. The bag fits over both channels, then tighten bags Draw String.
- (d) Care should be taken not to push the handle down toward floor further than necessary as it will force the Deflector against the dolly and it will peel off.

DO NOT RUN THE MACHINE WITHOUT DEFLECTOR BAFFLE INSTALLED!