

# POWER-VAC SWEEPERS

**PICKS UP EVERYTHING  
SAVE TIME AND MONEY**



**CLEANS UP TO 40,000 SQUARE FEET/HOUR**  
MACHINE SHOP SHAVINGS, FLAT STOCK, CANS, BOTTLES, BROKEN  
GLASS, SAND, PIECES OF WIRE, STRING, ROPE, ACORNS, WET AND  
DRY LEAVES, PAPER, MILK CARTONS, WRAPPINGS, CUPS, SCREWS,  
WASHERS, PLASTIC BOTTLES, FOAM PACKAGING, NEWSPAPERS,  
SAWDUST & WOOD SHAVINGS, INSULATION, BOXES, ETC.

**ELGEE**  
**POWER-VAC**<sup>TM</sup>

## ELGEE POWER - VAC SWEEPERS

**HANDLE ASSEMBLY:** Install 5 hole handle leg on right side of body with 5/16 – 18 x 1 3/4 bolts, flat washer and elastic stop nuts. Install 3 hole handle leg on left side of body with 5/16 x 1 3/4 flat washers and elastic stop nuts. Reference handle assembly drawing)  
Slide I.D. of each end of the U-handle over expanded end of above legs. NOTE: 2 small holes for mounting of throttle lever will be on the right at the operator position. Install 5/16 – 18 x 1 1/4 bolts through U-handle and legs, then tighten.

**THROTTLE CONTROL:** Install on engine first. See engine instruction sheet. Attach control lever at top of handle with screw provided (see assembly drawing). Use clips to hold control wire casing against handle. Work control for ease of operation and see that speed control on engine moves to both limits. Tighten inner control wire clamp, cut off excess and bend under.

**DEFLECTOR BAFFLE:** Install Deflector Baffle on the discharge chute of sweeper housing. Slide from left to right with ends of deflector baffle in the top and bottom channel of discharge chute. **Do not run the machine without the deflector baffle installed.** (See separate sheet)

**DOLLY ASSEMBLY:** Snaps (light press) over axle for easy attachment and use.

**BAG:** The Elgee bags are designed for use with the dolly platform that keeps the machine in proper balance and the bag from dragging on the ground while in use. When possible open the side vent zipper to allow dust and air to escape. This venting of air will allow the unit to pick up better and longer. When not practical to exhaust dust, close the zipper. **Shake out bag dust often to maintain good suction.**

**BAG INSTALLATION:** Slip the neck of the filter bag over the deflector baffle and past the U channels of the housing. Strap clamp should be just beyond top channel. Allow bag to dry when wet to avoid rotting. Launder only if necessary in cold water with bag inside out. **Do not hot air dry.** Hang to dry.

**ENGINE:** Read engine manual before starting.

**USE OF SWEEPER:** Throttle speed setting and speed of work depends upon debris to be cleaned and frequency of cleaning. Engine speed should be set at lowest RPM and still pick up debris. When encountering large debris such as cans, milk cartons, cups etc push down on handle raising the front of the unit, this will allow debris to pass under and into the unit.

**MAINTENANCE:** Clean bag often. Shake out dust to allow pores to breathe. Check engine oil level with each use. Add oil as needed.

**CHANGE OIL:** Remove filler cap, tilt unit and drain oil into large can. **Always remove spark plug wire from spark plug when working on the engine.** Refill oil as recommended in engine manual. Do not overfill.

### **Limited Warranty**

Elgee equipment carries a one year warranty against mechanical defect and workmanship, except for bags, throttle wires and rubber parts. Should defects develop, parts must be returned to our factory, prepaid, for inspection. Defective parts will be repaired or replaced (customer to furnish labor for removal and replacement of said parts). We will not be responsible for repairs outside of our factory without authorization.

**ENGINE WARRANTY:** Is subject to terms and conditions of the engine manufacturer. Engines may be sent to Elgee Mfg. Co., Inc. or any local motor dealer for repair.

## ELGEE LIMITED WARRANTY

For *ONE YEAR* from date of installation, Elgee will repair or replace (at Elgee's Opinion) for the original purchases, *FREE OF CHARGE*, any parts or parts found upon examination by the factory in Warren, New Jersey, or by any factory authorized center, to be defective in material and or workmanship.

Elgee equipment carries a one-year warranty against mechanical defects and workmanship, except for bags, wiring, fuel tubes, cables, brass nipples, and rubber parts. Should defects develop, parts must be returned to our factory prepaid for inspection. Elgee will not be responsible for repairs made outside of the factory without authorization.

Removal, reconnection, and all transportation charges on parts submitted for replacement under this warranty must be borne by the purchaser.

Any changes or modification of this unit without the expressed written consent of Elgee Manufacturing Company, Inc., will void this warranty.

Anything related to the conversion of an engine to propane fuel burning voids the manufacturers warranty pertaining to any part directly associated with propane fuel combustion. All other engine components carry full manufacturer's warranty.

Engine warranty is carried by the manufacturer and their authorized dealers. Honda engines carry a *TWO-YEAR* warranty. A *ONE-YEAR* warranty is carried on Industrial/Commercial (I/C) engines and 6HP (B&S) Intek engines. A 90-day warranty is offered on the 8HP (B&S) standard engines.

There is no warranty expressed or implied. Elgee and any or all sub-contractors shall in any event **(Not)** be liable for consequential damages.

Implied warranties, including those of merchantability and fitness for a particular purpose are limited to *ONE YEAR* from purchase and to the extent permitted by law and any and all implied warranties are excluded this is the exclusive remedy and liability for consequential damages under any and all warranties. Warranties are excluded to the extent exclusion permitted by law.

E-mail: [sales@elgee.com](mailto:sales@elgee.com)

Website: [www.elgee.com](http://www.elgee.com)



908-647-4100

800-742-0400

Fax: 908-647-4242

**Accessories Price List**

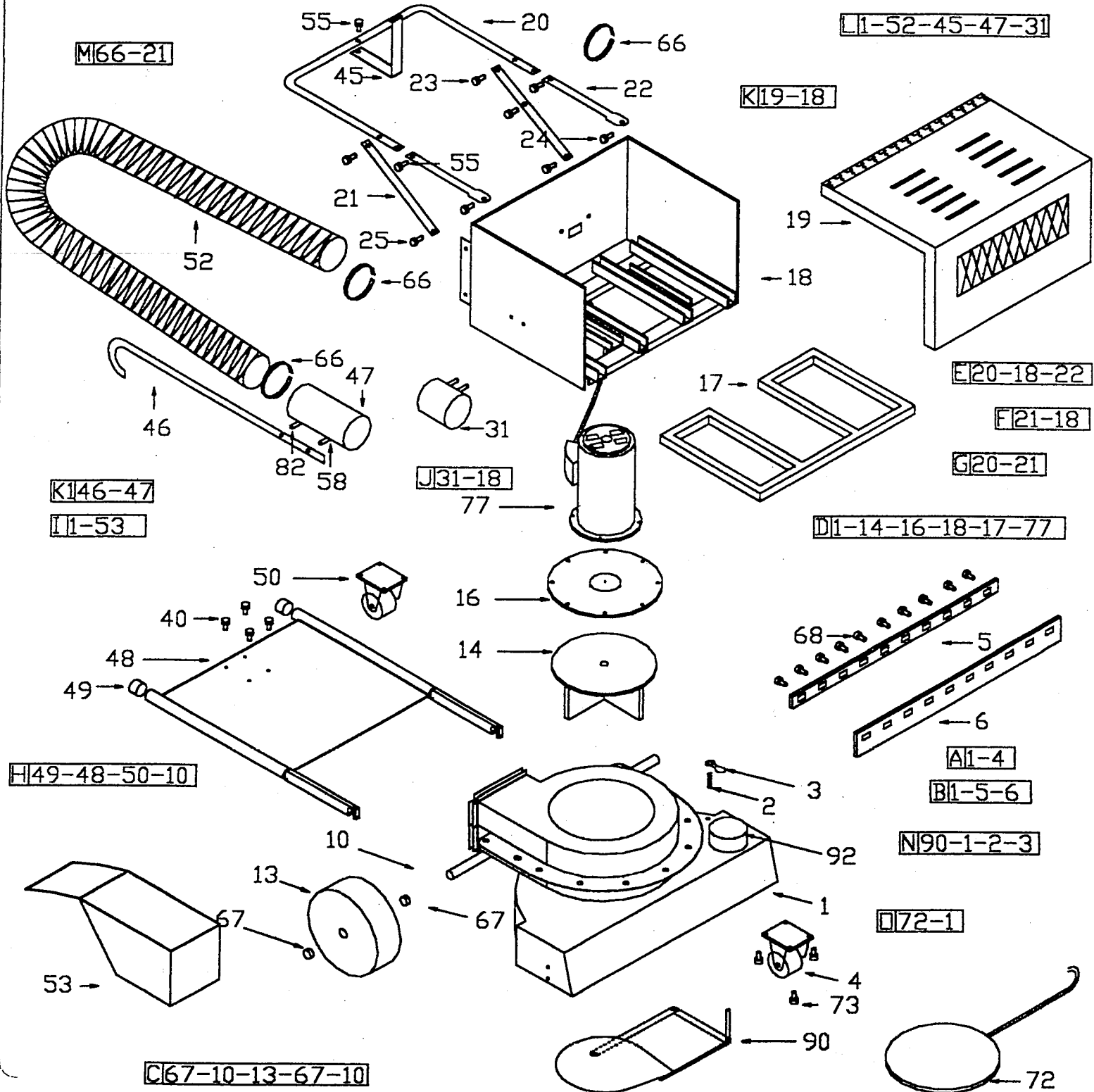
Effective 01/30/09

<b>MODEL</b>	<b>DESCRIPTION</b>	<b>PRICE</b>
<b><u>Bags</u></b>		
<i>W/60" zipper &amp; zippered side vent</i>		
TB-01	Filter bag cotton fleece lined .....	\$90.00
TB-03	Filter bag polyester felt rot-resistant .....	\$90.00
<b><u>Replacement Parts</u></b>		
FW-20	Front castor only ( <i>Polyurethane gray wheel</i> ) .....	\$18.95
SW-11	Side Wheel ( <i>10in. x 1.75in</i> ) .....	\$25.95
DB-00	Deflector baffle assembly .....	\$93.25
	<i>(Safety shield against heavy, sharp material required when using Booster Baffle)</i>	
HO-60	Hose baffle plate .....	\$38.75
	<i>(Used to close off bottom of a machine when maximum hose suction is required)</i>	
<b><u>Accessories</u></b>		
BR-30	Model 630 Brush Assembly ( <i>constant pressure type</i> ) .....	\$166.00
BR-40	Model 640 Brush Assembly ( <i>constant pressure type</i> ) .....	\$215.00
LB-30	Leaf Blower Attachment .....	\$137.00
FW-30	Adjustable Front Side Wheel Assembly Rigid type. ....	\$79.00
FW-40	Outboard adjustable Swivel type.....	\$197.00
BS-00	Bag Sling ( <i>used in place of dolly * turf application</i> ).....	\$37.00
AB-00	Automatic baffle plate .....	\$164.00
HO-00	Hose Assembly .....	\$330.00
LPT-01	20# Horizontal vapor propane tank .....	\$186.00
CV-01	Crack-Vac Funnel	\$230.00
<b><u>Special Accessories</u></b>		
PM-30	630 Magnetic Pick-up attachment (perm. Magnet) .....	\$555.00
PM-40	640 Magnetic Pick-up attachment (perm. Magnet) .....	\$647.00
*SA-05	Spark Arresting Assembly, 6HP 398067 .....	\$23.00
*SA-08	Spark Arresting Assembly, 8HP 399541 .....	\$23.00
*SA-09	Spark Arresting Assembly, 5.5 Honda 4165866 .....	\$23.00
*LT-05	Low Toner Muffler, 6HP 391313 .....	\$26.00
*LT-08	Low Toner Muffler, 8HP 398507 .....	\$23.00
*SLT-08	Super Low Toner Muffler, 8HP 494222 .....	\$35.00
*SPE-00	Spark plug elbow ( <i>Spark Arrestor</i> ) 66538S .....	\$2.60
	<b>Electric Starter Units- (10HP Models only) Contact factory for pricing</b>	
	*Indicates Net Prices	

**ALL PRICES ARE F.O.B WARREN, NJ U.S.A**  
**PRICES & SPECIFICATIONS ARE SUBJECT TO CHANGE WITHOUT NOTICE**  
**ELGEE MFG. CO., INC. 225 STIRLING ROAD, WARREN, NJ 07059**  
**E-mail: sales@elgee.com Website: www.elgee.com**



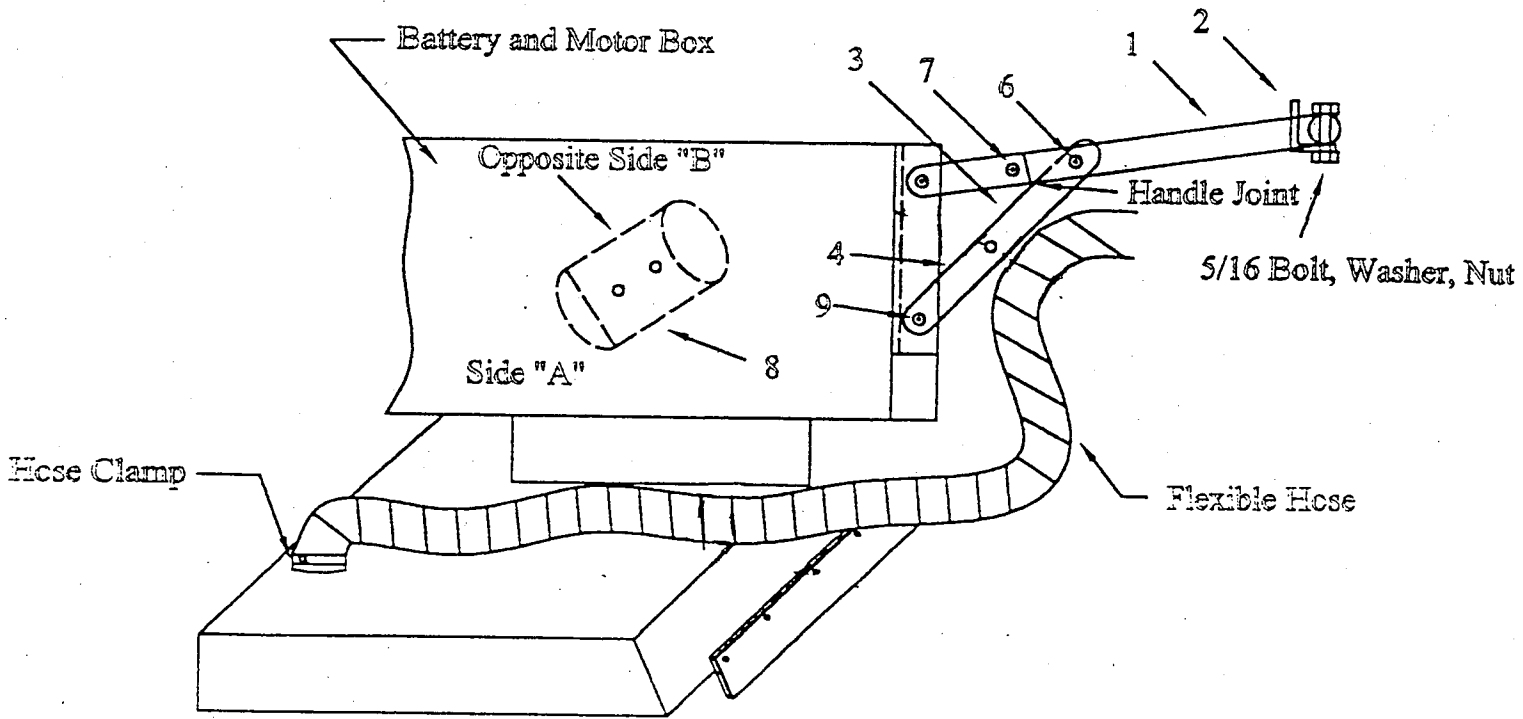
# POWER-VAC SWEEPER BATTERY 30"-40"



## POWER-VAC-SWEEPER-BATTERY PARTS LIST

DETAIL	PC.No.	NAME	DESCRIPTION	ELGEE symbol 30" - 40"
A	1	Involute		IV - 18
	4	Swivel Wheel Hard		FW - 25
B	1	Involute		IV - 18
	5	Rear Flap Metal Clamp		IV - 03
	6	Rear Rubber Flap		IV - 02
C	67	Shaft Collar 3/4" Dia	2 pcs	SW - 02
	10	Axle		
	13	Front Wheel (Hard Rubber Type) PFLEFER	Left and Right	SW - 10
	67	Shaft Collar 3/4" Dia	2 pcs	SW - 02
	10	Axle		
D	1	Involute		IV - 18
	14	Impellor		IM - 42
	77	Motor		MM - 41
	16	Mounting Plate		MP - 11
	17	Battery Box Bottom Support Bracket		BA - 02
	18	Battery Case		
E	22	Leg	2 pcs	HA - 12
	20	"U" Handle		HA - 11
	18	Battery Case		
F	21	Leg	2 pcs	
	18	Battery Case		
G	20	"U" Handle		HA - 11
	21	Leg	2 pcs	HA - 12
H	49	Rubber Tips for Dolly Shaft		DA - 02
	48	Dolly Platform		DA - 00
	50	Dolly Swivel Wheel		DA - 03
	10	Axle		edit
I	1	Involute		IV - 18
	53	Deflector Baffle		DB - 00
J	31	Hose Cup		HO - 04
	18	Battery Case		
K	18	Battery Case		
	19	Cover		
K1	47	Hose Tube		
	46	Cane		HO - 18
L	1	Involute		IV - 18
	52	Hose		HO - 30
	45	Hose Retainer		HO - 47
	47	Hose Tube		
	31	Hose Cup		
M	66	Clamp	3 pcs	HO - 32
	21	Leg		
N	90	Auto Baffle		
	1	Involute		
	2	Spring		
	3	Handle		
O	72	Hose Baffle		
	1	Involute		IV - 18
STANDARD PARTS				
	23	Screw, Washer, Nut	5/16-18 x 1 1/2	
	24	Screw, Washer, Nut	5/16-18 x 1 3/4	
	40	Screw, Washer, Nut	5/16-18 x 1 3/4	
	55	Screw, Washer, Nut	5/16-18 x 1 3/4	
	73	Screw, Washer, Nut	5/16-18 x 1 3/4	
	68	Screw, Washer, Nut	5/16-18 x 1 3/4	
	25	Screw, Washer, Nut	5/16-18 x 1 3/4	

# BATTERY HANDLE ASSEMBLY



VIEW OF SIDE OF MACHINE ( SIDE "A" )

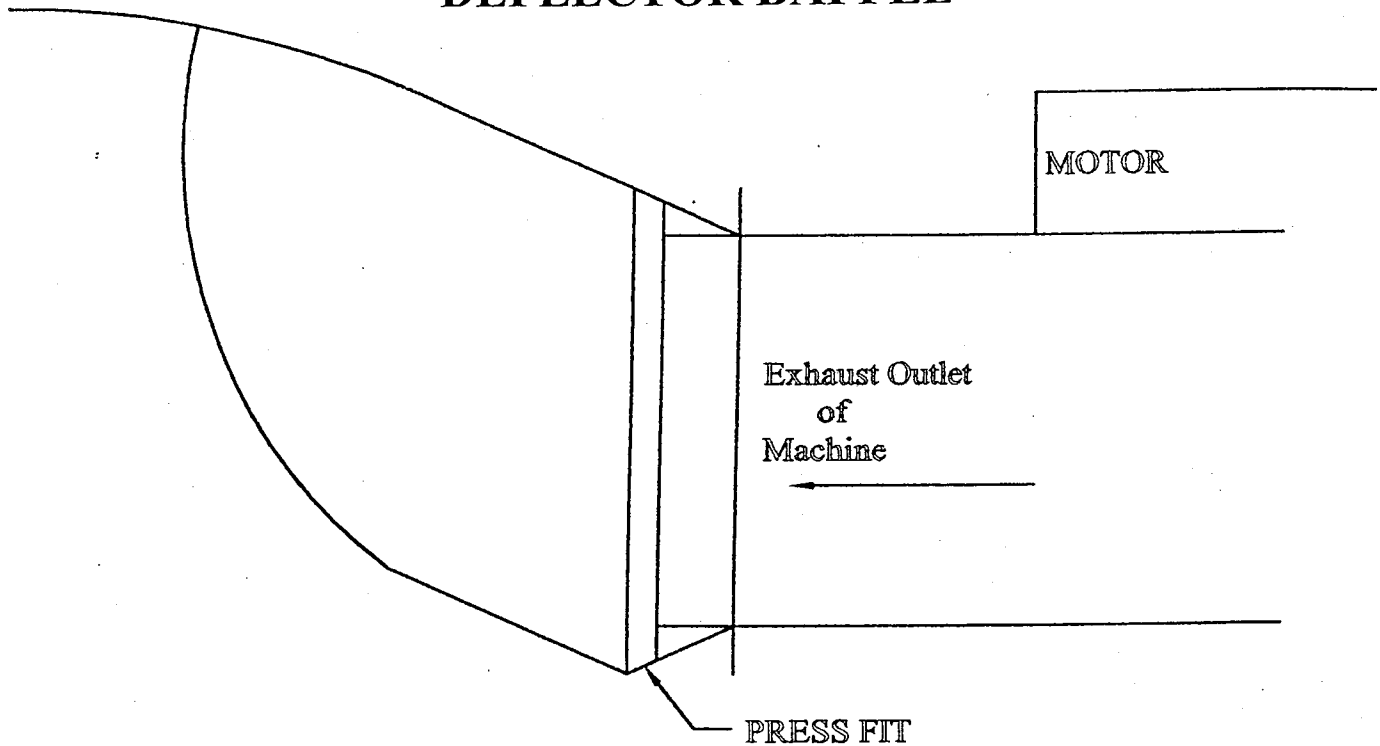
NOTE: (When supplied )

- 1- Hose Coupling goes on inside Of Left Handle
- 2- Hose Cup goes on right side of Battery Box
- 3- Hose Retainer Bracket "L" goes at top of "U" Handle
- 4- 10 feet hose is attached at "5" curl hose around "L" bracket and into the Cup ( Always ready to use )
- 5- Remaining hose goes to machine coupling

DETAIL	PC.No.	NAME	DESCRIPTION
	1	Handle "U"	
	2	"L" Bracket	
	3	Handle Extended Leg	2 pcs
	4	3/4 Support Pipe	2 pcs
	6	5/16 x 18-11/2 Screw, Nut	2 pcs
	7	5/16 x 18-11/4 Screw, Nut	2 pcs
	8	Hose Cup	
	9	5/16 x 18-1 3/4 Screw, Nut	4 pcs



## DEFLECTOR BAFFLE



### APPLICATION:

- (a) Used to provide additional protection for bags when recovering heavy or sharp debris.
- (b) Especially necessary when using booster baffle.
- (c) Very helpful in providing dead air space when recovering excess dust. Prolongs emptying cycle of bag during heavy dust conditions (merely shut off machine and shake bag down)

### INSTALLATION:

- (a) Install by sliding the Deflector sideways in top and bottom exhaust channels as shown above. Press fit is required. Start at the Center of the machine and strike with mallet or wood to slide until centered over exhaust outlet.
- (b) If Deflector does not fit tightly in channels, remove and bend bottom edge of 16 gauge sheet metal lip up slightly, for Press fit.
- (c) With Deflector in place the bag may then be attached. The bag fits over both channels, then tighten bags Draw String.
- (d) Care should be taken not to push the handle down toward floor further than necessary as it will force the Deflector against the dolly and it will peel off.

**DO NOT RUN THE MACHINE WITHOUT DEFLECTOR BAFFLE INSTALLED!**